

Data Quality Management for SAP®

Product Portfolio

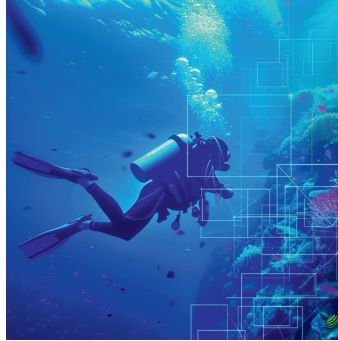


SAP® Certified
Integration

The foundation of every successful value creation process is reliable master data.

Reliable master data is essential for the success of S/4HANA conversions and ERP system consolidations. Companies invest considerable time in correction, cleansing, and harmonization, which is nearly impossible to achieve manually without the proper tools.

As an SAP® partner, we have offered certified add-ons for data quality management since 2000. Our solutions support the entire master data lifecycle in SAP systems, such as S/4HANA, as well as across systems, acting as a master data hub. Integrated web services improve data quality in targeted areas.



Our Experience

With over 1,100 successfully completed projects and more than 200 customers on around 600 SAP systems (SAP ERP, S/4HANA, SAP CRM), we offer tried-and-tested solutions for efficient master data management and master data governance.

Our more than 30 SAP add-ons are delivered with a best-practice approach and ready-to-run customizing. This enables the project team to work on their own test system in a timely manner, test processes, and quickly achieve productive results. The modular solutions can be used individually or in combination in SAP. Thanks to intuitive interfaces in the familiar SAP environment, we achieve a high level of user acceptance, even internationally.

The primary focus of our services is on customer, supplier, material, and G/L account master data. We also integrate and manage this data across various systems, including both SAP and non-SAP landscapes. A regulated creation and maintenance process ensures sustainable data quality.

We use SAP compliant web services for validation and enrichment, including for bank master data, addresses, group hierarchy, VAT IDs, tax numbers, industry key figures, and creditworthiness.

Our specialized team in Nuremberg and Frankfurt exclusively develops and supports our data quality management solutions — quickly, competently, and reliably.

Our Consulting and Services

- Strategies and measures for medium- and long-term improvement of data quality
- Optimal use of customer, vendor, central business partner, and material master objects
- Transition to S/4HANA
- Customer-vendor integration (CVI)
- Import, export, migration of master data
- Data analysis of master data
- Data enrichment
- Data cleansing, duplicates resolution
- Centralized/decentralized master data creation
- Nominal/actual analysis of master data processes
- Implementation of data governance processes
- Integration of CRM, SRM, portals
- Master data distribution
- Integration of rating information for FSCM
- Rule-based data cleansing of material master
- Checking master data with rules, BRF+
- Classification of material master data
- Structuring of material master data
- Duplication of material master data
- Correct use of modules and fields
- Archiving of master data in SAP
- Information Life Cycle Management (SAP ILM)
- GDPR in relation to master data management
- Connecting of partner solutions to SAP systems

Selection of Reference Customers

BayWa

 **BERNER GROUP**

 **DEKRA**

 **EnBW**

 **FABER-CASTELL**
since 1761

FLUGHAFEN ZÜRICH

 **JUNGHEINRICH**

 **InfoKom**
Das Systemhaus des LVR

IRÖHM
TRADITIONALLY INNOVATIVE

 **SCHMITZ CARGOBULL**
The Trailer Company.

 **TÜVRheinland®**
Genau. Richtig.

VIESSMANN

Data Quality Products

Marlin Suite – SAP integrated Add-ons

- **Master Data Governance**
Transactional creation and maintenance processes for Customer | Vendor | Material Master | Corporate Business Partner | Bank Master | G/L Accounts | Cross-System Master Data Management | Pre-allocation and rules | Evaluation via SLAs
- **Duplicate Master Data**
Duplicate check of customers, vendors, business partners, contact persons, and material master data | Dialog check, stock check | External check via CSV upload | Head duplicate detection | Connection to non-SAP systems | Processing monitor with transaction data | Toolset for editing duplicates, copying company codes, purchasing organizations, sales organizations, purchasing info record, equipment, technical work centers, contracts
- **Address validation**
International address correction, enrichment, standardization | Address verification in dialog and batch | Enrichment of geocoordinates
- **Fault-tolerant search**
Field-specific and cross-field SAP search for material master, customers, vendors, business partners, MM and SD documents
- **Data enrichment**
Integrated master data comparison against external reference files (Dun & Bradstreet, Creditsafe) | Enrichment with field content, company hierarchy, rating information | In dialog, inventory | Updating service
- **VAT ID check**
Verification of VAT IDs for Germany, Austria, and Europe | in dialog and inventory | Verification on SD documents | Transliteration | Whitelisting
- **Compliance Screening**
Embargo and boycott list comparison | for customer, vendor, business partner, personnel, and bank master data | in dialog and against inventory | in MM, SD, and FI documents | Import of sanctions-, Dow Jones, PeP-, and fraud- lists
- **Master data migration**
Import of data using a migration program | integrated address validation, duplicate check, VAT ID check | data preparation via clearing and revision monitor
- **Bank validation**
The bank master data is checked and corrected using the IBAN. If it does not exist, it is created automatically.
- **Transfer of imprint or signature**
Quick entry of SAP fields from the email signature or website imprint. The fields are converted and transferred correctly to SAP.
- **Data Quality Tool Set**
Copy of organizational views of duplicates such as company code, EK-Org., VK.-Org. | Copy of purchasing info record to other suppliers
- **Translation of SAP add-ons**
Translation (Dynpros, messages, texts) of SAP add-ons and Z developments into various languages



Scarus Suite – Data Quality Technologies

- **Data Quality Server – IntelliSearch:** The Scarus Data Quality Server (SDQ) – intelligent search technology with IntelliSearch API | via SOAP or REST | data quality services such as duplicate checking, address validation, data preparation, rule violation detection
- **Data Sanctions:** Web service for importing sanctions lists for Marlin products | CSV-, XML-, SAP GTS-format
- **Data LEI-Code:** Identification and enrichment of master data with the EU LEI code
- **Data district municipality code:** Web service for the district municipality code to enrich the address

About us: ISO-Gruppe

Products and solutions for:

- Automation
- Data Quality
- Aviation
- Managed Services
- Medical Technology
- Public Services
- Travel

Founded: 1979

Employees: >700

National locations:

- Nuremberg
- Frankfurt
- Würzburg
- Munich
- Berlin
- Karlsruhe

International locations:

- Vienna, Austria
- Czestochowa, Poland
- Montréal, Canada

The companies of the ISO-Gruppe have a quality management system certified according to **DIN EN ISO 9001:2015**.

Contact

ISO Professional Services GmbH
Eichendorffstrasse 33
90491 Nuremberg
T +49 911 99 594-0
info@iso-gruppe.com
www.iso-gruppe.com

